

KARL REARDON

Senior Class, president
Student Council
Future Auto Drivers

All the world's a stage----and I'm the director.



EDWIN BEISCHER

Future Farmers of America

His deeds are many,
his faults are few.
To be his friend
is bewt for you.

RICHARD CARTER

Senior Class, vice-president
Future Farmers of America
Dramatic Club

Our little bellboy
always chiming in
with resounding remarks.



MARION CASLER

Future Auto Drivers

A scientific mind
is hers.

DOROTHY PERIH

Senior Class, secretary
Journalism Club
Future Auto Drivers

She's armed with-
out, who's innocent
within.



KATHLEEN CORTE

Senior play
Band
Glee Club

"Little one".

LENA BARCA

Senior Class, treasurer
Future Auto Drivers

Angels are painted
fair to look like
you.



JOSEPH CROCE

Band
Future Auto Drivers
Glee Club

A mighty man was
he.

ADELINE AMBRIDGE

Future Auto Drivers

Still water runs
deep.



WILLIAM CUNNINGHAM

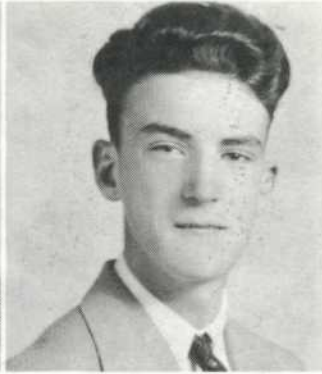
Future Farmers of America
Athletic Association
president

Sunny disposition
and ready for fun.

GORDON DAVIS

Future Farmers of
America
Glee Club

He had a grin you
could hang earrings
on.



ROGER HOTELING

"I's wicked I is.
I's mighty wicked;
anyhow I can't help
it."

HELEN DAVIS

Tatler, editor-in-
chief
Journalism Club
Handicraft Club

I've got a mind of
my own.



HELEN KANUCK

Journalism Club
Handicraft Club

She's the loveliest
lassie that ever
trips on the green.

BETTY DODSON

Future Auto Drivers,
secretary-treasurer

A woman who thinks
is lost.



LEO KARDASH

Future Farmers of
America

Don't take life so
seriously; you can't
get out of it alive
anyway.

RICHARD FRANCISCO

Band
Manager of basket-
ball team

A chuckle that
cheers anyone who
hears.



DAVID KEBA

Future Farmers of
America
Basketball team

Schools are all
right except for the
classes.

BETTY JANE HAYES

Glee Club
Band
Senior play

Our "strawberry
blonde" songbird



VIVIAN LAWYER

Some treasures lie
in a hidden place.

HELEN LENIG

Band
Glee Club

I wonder what fool
it was that first
invented kissing.



DONALD NELLIS

Future Farmers of
America, president
Band

Everyone looks up
to him (in more ways
than one).

JEAN LIVINGSTON

Journalism Club
Girls Athletics

The model of wis-
dom seasoned with
wit.



PAULINE O'BRIEN

Student Council
Journalism Club

My idea of an
agreeable person is
a person who agrees
with me.

NELLO MONTONI

Future Auto Drivers
Boys Athletics

Ace high---in bas-
ketball, in popular-
ity, in attitude and
in spirit.



HELEN OSIPOVICH

Future Auto Drivers

My path is peace.

GEORGINE MOYER

Dramatic Club

A little work---a
little play (and the
less work the bet-
ter).



ANNA PAPA

Journalism Club
Future Auto Drivers

She adds sparkle
to any group.

IRENE MUELLER

Personal Typing Club
Handicraft Club

How sweet and fair
she seems to be.



ROBERT PICKARD

Dramatic Club, pres-
ident

Always just a lit-
tle puzzled.

OLGA PIETRYZSK

Dramatic Club

Good pickings for a movie scout.



FRANCES SMITH

Future Auto Drivers

I am resolved to grow fat and look young until forty.



HELEN POLINSKI

Future Auto Drivers

Knowledge is power.



HOWARD STEINBURG

Air Raid Warden

The man who got away with everything.



MARGARET REDDY

Future Auto Drivers

One who found joy in doing good.



RAMON VAN SLYKE

Camera Club

I'm a love lorn creetur and everythink goes contrairy with me.



RICHARD ROBINSON

Basketball team
Baseball team
Student Council, '42 president

Go to the ant, you sluggard; consider her ways and be wise.



MILDRED WALRATH

Senior Play
Glee Club
Band
Cheerleader, captain

A personality that fairly yells 'Here I come'.



MARTHA SAVARY

Journalism Club
Band

Stolen sweets are best.



MARION WILES

Future Auto Drivers

She smiled and the shadows departed.



LOUISE WOLINSKI

Best known for her
sweet shy smile.



MATHEA YARUSH

Silence sweeter is
than speech.

THE SENIORS: THE GENERALS

The generals' emblems are stars, symbolizing that they have reached the highest place possible and that the heaven is their abode. Like the stars, also, their brilliance shines afar to inspire all.

OFFICERS

| | |
|----------------|----------------|
| President | Karl Reardon |
| Vice President | Richard Carter |
| Secretary | Dorothy Perih |
| Treasurer | Lena Barca |

MOTTO

BE TO THE DARKENED WORLD A FLAME

FLOWER

Red Rose

COLORS

Green and white

ACTIVITIES

| | |
|-------------|---|
| November 14 | Senior Play, "Don't Darken My Door", with-- |
| | Kathleen Corte as Rosemary, the niece |
| | Mildred Walrath as Poppy, the maid |
| | Olga Pietryzsk as Jane, the novelist |
| | Frances Smith as Louisa, an old maid |
| | Betty Jane Hayes as Susie, an old maid |
| | Richard Robinson as Tom, the lover |
| | Richard Carter as Roger, the uncle |
| | Karl Reardon as Alec, the handyman |
| January 9 | Senior Prom, with Jack Smith's orchestra |
| June | Junior-Senior banquet |
| June 21 | Baccalaureate |
| June 22 | Class Night |
| June 23 | Graduation |

Oh, pause not, then--nor falter,
For Fate is in your hand;
Climb ever,--onward,--upward,
To where your feet would stand;
The rocks are rough and rugged,
But victory is sublime;
Step bravely, boldly forward,
And climb, and climb, and climb!

Longfellow